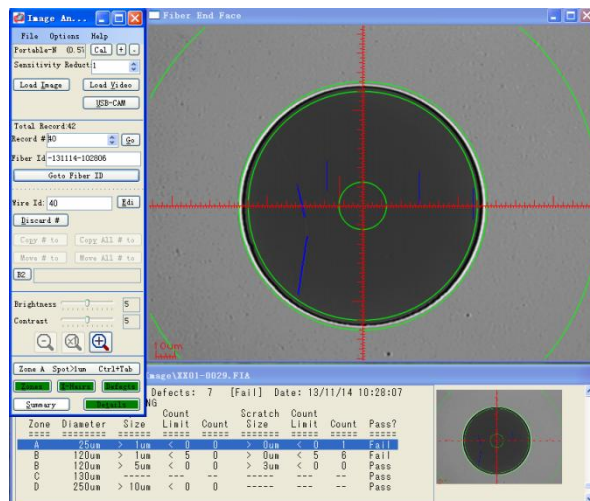


### 400X FPM-700 Fiber Inspection Probe

400X FPM-700 Fiber Inspection Probe features USB function to connect the laptop or PC directly, which includes image sensor or COMS inside the probe to have real-time inspection without requirement for any additional power cord and driver.

It can also be equipped with EFD3.3.0 Data Software to have end face verified based on different IEC/IPC internal criteria or customize when it connects to displayer. All spots, scratches defects around end face can be easily figured out, measured and counted with PDF or excel report file generated. It's most applied in fiber operator and research institution.



FPM-700B-P



FPM-700B2

#### Feature:

- ✧ Single way control for easy adjustment; stir the wheel with fingers simply to have loop control with back or forward movement.
- ✧ 98% Image centralization and alignment consistency.
- ✧ 400x Magnification Ability, less more 1um Resolution.
- ✧ Digital sensor or COMS inside the probe to access the laptop or PC directly.
- ✧ Over 30 assorted of tips available to have both PC and APC end face inspection
- ✧ 60°angle tips to test multiple types of connectors in many hard-to-access places or bottom of patch panel.
- ✧ Ability to inspect MPO/MTP etc PC and APC multiple cores end face.
- ✧ Stable for more than 8 hrs continuous work.
- ✧ Driver free installation, Windows/Linux/MacOS support
- ✧ Brightness and contrast can be adjusted

Fiber Zip Technology Co.,Ltd

Technical Details:

Component	Details	Value
FPM-700B-P Probe	Magnification Ability	400X
	Resolution(um)	1.0
	View of Field(mm)	X/0.3011, Y/0.2272
	Focus time	2-6s
	Alignment	>98%
	L*W*H(mm)	180x 22x 56
	Weight(kg)	0.11
	Output	Dual Pin AV Port
	Connect to	OTDR or other USB test equipment, connect to PC directly
FPM-700B2 Probe	Magnification Ability	400X
	Resolution(um)	1.0
	View of Field(mm)	X/0.3487, Y/0.2632
	Focus Time	2-6s
	Alignment	>98%
	L*W*H(mm)	180x 22x 55
	Weight(kg)	0.11
	Output	Dual PIN AV Port, Digital USB1.0/2.0
	Connect to	Analogic products, PC, and other digital picture displayers including OTDR
EFD3.3.0 Version Data Analyze Software (optional)	<ul style="list-style-type: none"> <li>◇ Verification of Fiber end face quality, pass or fail judgment based on four type international criteria IEC/IPC or customize.</li> <li>◇ Report file generated to have scratch, spot etc defects measured and counted around the fiber end face.</li> <li>◇ Analyze Support in image, video and real-time inspection.</li> <li>◇ Analyze Support in 80x 200x 400x Magnification.</li> <li>◇ Support in all Windows Systems.</li> <li>◇ PDF /Excel file report can be generated.</li> <li>◇ Contrast/Brightness adjustment for analyze.</li> </ul>	

Product Package Option:

	ITEM LIST	Quantity(PCS)
FPM-700B-P Standard Configuration	FPM-700B-P Probe	1
	Standard tip: SC-P-F,FC-P-F,LC-P-F,2.5mm-M	1 respectively
	Black Bag	1
FPM-700B2 Standard Configuration	FPM-700B2 Probe	1
	Standard tip: SC-P-F,FC-P-F,LC-P-F,2.5mm-M	1 respectively
	Black Bag	1
Optional Software	EFD3.3.0 Version Data Analyze Software	